



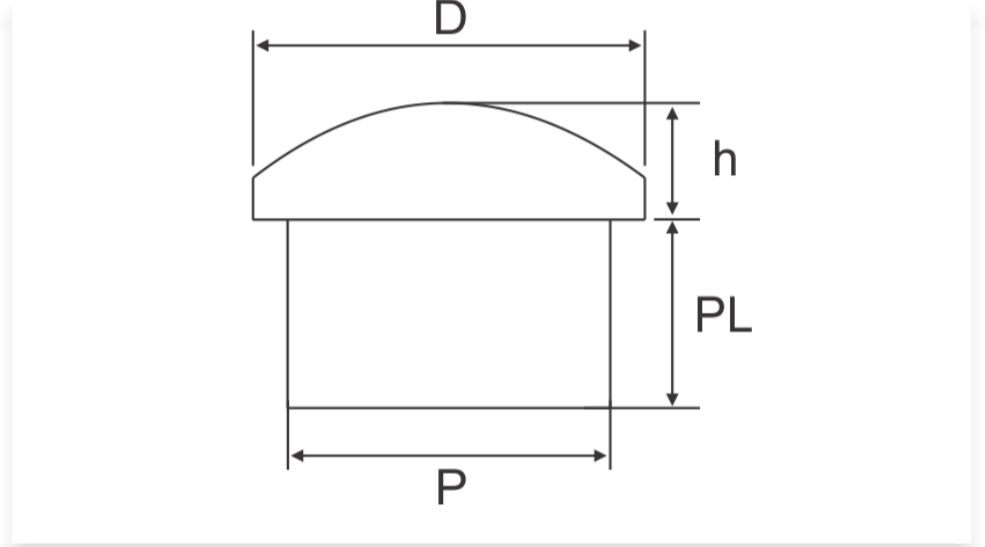
Polyamide Dome Plug / Protection Tab - Metric / NPT Thread

Dome Plugs made of Polyamide 6 are used in assembly work for instruments, machines etc., where only Cable Glands are mounted and cable connection is made later. This prevents dust and moisture from penetrating the enclosure or equipment.

Technical Data

Material	Polyamide 6
Colour	RAL 9005 (Black)
Temperature Range	-20° C to +100°C Continuous, -30°C to +150°C Intermittent
Application	For Metric and NPT threaded Cable Glands
Flammability	UL 94 V2

Product Drawing



Ordering Information

Dome Plugs for Metric / NPT Thread Polyamide Cable Glands

Cat. No.	For Cable Gland Size	D (mm)	h (mm)	Clamping Range(mm)	PL (mm)	P (mm)Ø	Standard Pack (Pieces)
BDP-09-22	M 12	9.2	4	3 - 6.5	12	6.4	100
BDP-11-22	M16 (EU)	10.5	4.7	4 - 8	13.7	8	50
BDP-13-22	M 16 / NPT 3/8"	13.3	5.3	5 - 10	9	9.7	50
BDP-16-22	M 20 / NPT 1/2"	15.8	8	6 - 12	13	12	50
BDP-18-22	M 20 / NPT 1/2"	18	8.7	10 - 14	13.5	13.6	50
BDP-20-22	M 25 (EU)	19.9	7.3	11 - 17	14.5	16.4	50
BDP-22-22	M 25 / NPT 3/4"	22	10	13 - 18	14	17.8	25
BDP-24-22	M 32 (EU)	24.1	9.2	15 - 21	15.5	20.4	25
BDP-29-22	M 32 / NPT 1"	28.5	9.7	18 - 25	15	25	25
BDP-32-22	M 40 (EU)	31.5	9.2	19 - 28	15.8	27.3	10
BDP-37-22	M 40	36.8	10.7	22 - 32	17	31.8	10
BDP-45-22	M 50	43.3	11.9	30 - 38	20.2	38	10
BDP-52-22	M 63	51	16	34 - 44	22.5	44.2	10