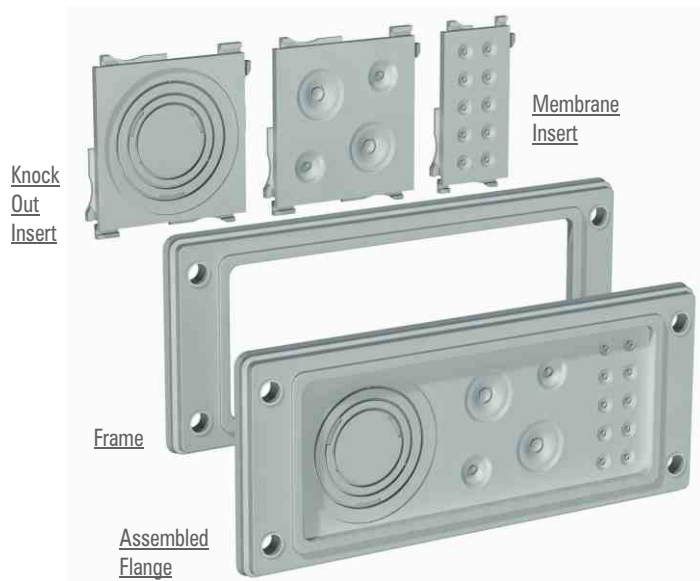


DESIGN-A-FLANGE



The Design – A – Flange system is a new and unique concept in which you can have the ease of choosing from a combination of frames and modular inserts to create your very own customized flange for control panels and junction boxes.

The Fiberglass re-enforced Polypropylene Inserts are very rigid and carry soft TPE, push-out membrane seals of various sizes good enough to accommodate wire sizes ranging from 4 mm to 50 mm dia. The push out membranes ensure that an IP65 grade protection level is achieved.

Frames are available in two sizes FL21 and FL13 which can accommodate a combination of inserts. Once the inserts are assembled together and inserted into the frame they lock on to the frame and to each other ensuring that a very rigid patented Flange system is created with IP65 grade protection.

In case kink-protection is required for cables so that the weight of the cables to do stress the connections (inside the panel) the membranes can be easily cut out and replaced with either high protection class grommets (page no. 3) or with cable glands (page no. 2)

Material	Fiberglass re-inforced Polypropylene and TPE - Halogen Free UL approved materials
Colour	RAL 7035 (Light Grey)
Protection Class	IP 65
Temperature Range	-20°C to +125°C
Test Standards	EN 60529:1991+A1, EN 60670-1:2005

INSERTS FOR FL21 FRAME

Inserts 68 x 68			
FL21/68/M25/M16	FL21/68/KO	FL21/68/714	FL21/68/2030/1020
2 x M25 8-17 mm 2 x M16 5-10 mm	KNOCK OUT M32 M40 M50	9 x 7-14 mm	2 x 20-30 mm 2 x 10-20 mm

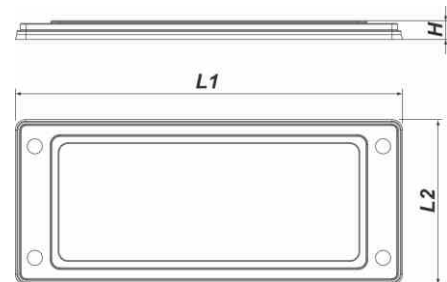
Inserts 68 x 68		Inserts 68 x 34	
FL21/68/3050	FL21/34/817	FL21/34/M20	FL21/34/410
30-50 mm	2 x 8-17 mm	2 x M20 6-13 mm	10 x 4-10 mm

INSERTS FOR FL13 FRAME

Inserts 34 x 68			Inserts 34 x 34	
FL13/68/817	FL13/68/M20	FL13/68/410	FL13/34/M20	
2 x 8-17 mm	2 x M20 6-13 mm	10 x 4-10 mm	1 x M20	6-13 mm



Frame Cat. No. & Dimensions



Cat. No.	L1	L2	H
FL 21	214	90	9
FL 13	134	52	6.5

Combination of Inserts that can be used with Frames

Combinations		A	B	C	Representative Drawing
FL 21	68 x 68	2	1	-	
	68 x 34	1	3	5	
FL 13	34 x 68	1	-	-	
	34 x 34	1	3	-	